


PRODUCT SHEET

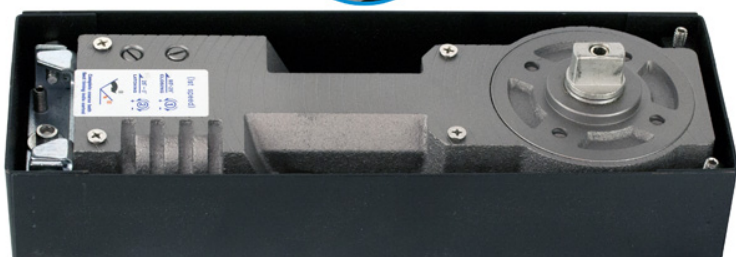
Description:

Floor Spring "Hekla" W/Interchangeable Spindle, 116DG Opening Max Weight: 135KG, Max Door Width: 1100mm, Size: 50X295X106mm, 2-Point Speed Adjustment, Fixing at 90 & 270DG, Cover Plate, to be Bought Separately, Similar to Dorma FS80

Item number:

17.87.201-0

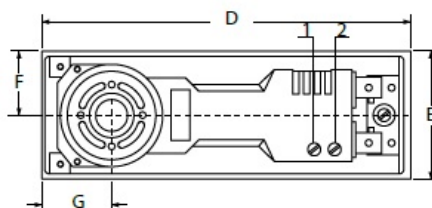
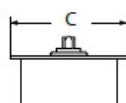
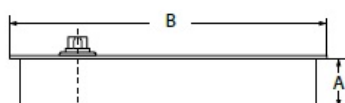
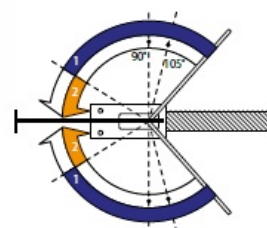
Units	Box	Carton	HS Code	Barcode
Pcs.	1	4	8302415000	
				5704866075022



EN 1154 approved

1 section adjust 90° -25° closing speed
2 section adjust 25° -0° closing speed

A	B	C	D	E	F	G
50	311	124	295	106	49	53-60



SISO A/S

Mileparken 11
DK-2740 Skovlunde
Denmark
VAT: DK 24786013

Phone +45 45 830 900

www.siso.dk
siso@siso.dk

Danske Bank
Nytovr Branch
Copenhagen
SWIFT: DABADKKK

Account no.
4180 3112 112936
IBAN Account
DK7230003112112936